

PORT OF TOWNSVILLE

NORTHERN AUSTRALIA'S TRANSPORT LINK TO THE WORLD



RANEE CROSBY
CHIEF EXECUTIVE OFFICER
22 OCTOBER 2016



240000

POPULATION

\$18.4_{BN}

GROSS REGIONAL PRODUCT

7₊%

ANNUAL AVERAGE ECONOMIC
GROWTH SINCE 2001

6.8%

QUEENSLAND GRP

NORTH QUEENSLAND

A nighttime photograph of a marina in North Queensland. The water is dark blue, reflecting the city lights and the colorful twilight sky. Several sailboats are docked at the pier, and a large white yacht is prominent in the foreground. In the background, modern apartment buildings and a prominent hill are visible under a sky with soft pink and purple hues.

>300

HECTARES LAND



>400² KM

PORT LIMITS



2 Ports

TOWNSVILLE & LUCINDA

\$625M TOTAL ASSETS

9

OPERATING BERTHS



>150

YEARS OPERATION





9,000

DIRECT & INDIRECT JOBS



10

MILLION TONNES TRADE WORTH

\$11 BN

VALUE EACH YEAR

DARWIN	2015	2036
POPULATION:	130,585	222,075
TONNAGE:	3.423 MILLION TONNES PER YEAR	

CAIRNS	2015	2036
POPULATION	158,985	244,083
TONNAGE	1.9 MILLION TONNES PER YEAR	

TOWNSVILLE	2015	2036
POPULATION:	192,038	314,362
TONNAGE:	10.49 MILLION TONNES PER YEAR	

MACKAY	2015	2036
POPULATION	121,090	197,905
TONNAGE	2.89 MILLION TONNES PER YEAR	

BRISBANE	2015	2036
POPULATION:	2.2M	3.4M
TONNAGE:	38.69 MILLION TONNES PER YEAR	

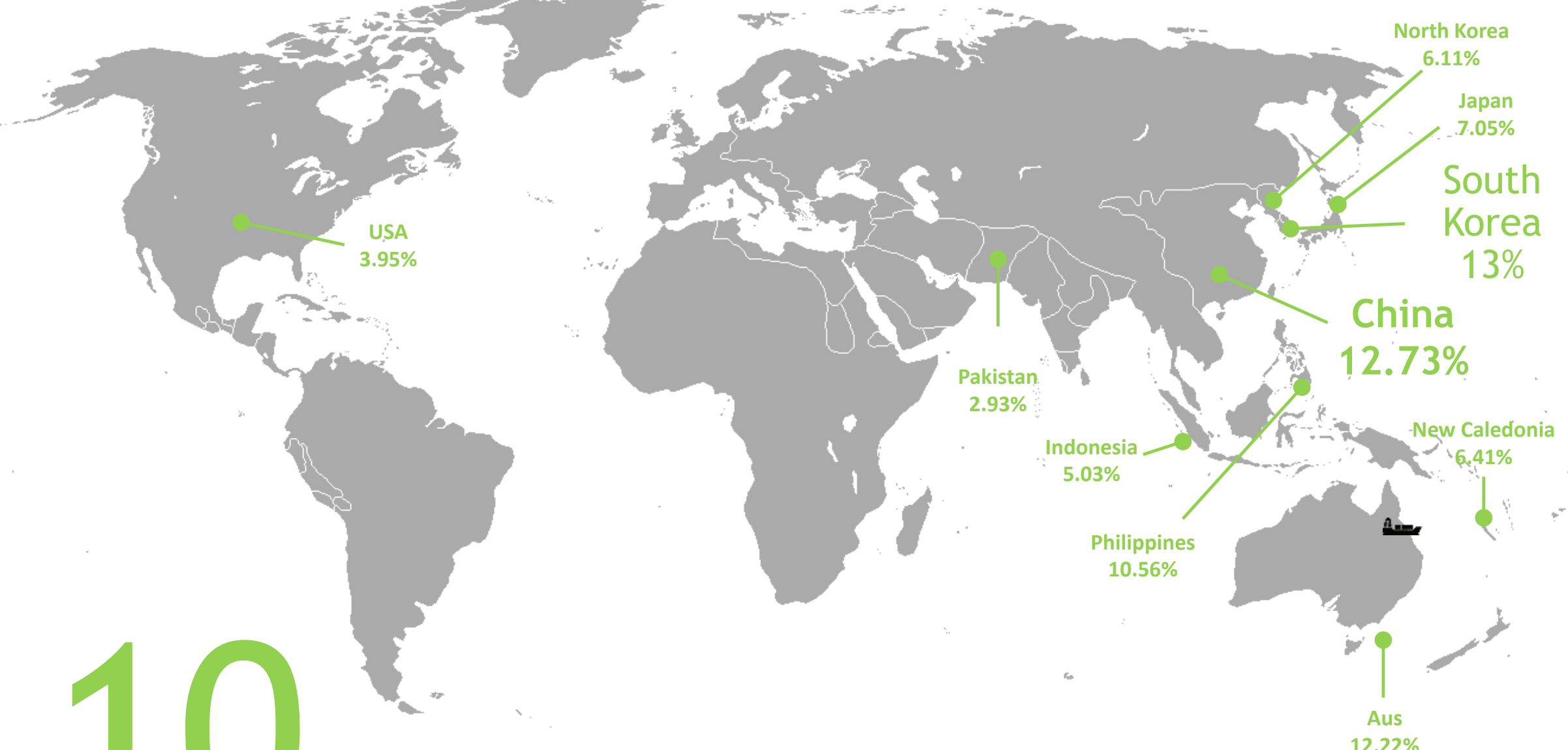




CONNECTING NORTH QUEENSLAND TO

> **240** PORTS IN

> **40** COUNTRIES



10

TOP TRADING PARTNERS



MINING &
RESOURCES

AGRICULTURE

FUEL, CEMENT &
CHEMICALS

GENERAL CARGO

45.20%

35.52%

11.33%

7.95%

4.4 MILLION TONNES

3.5 MILLION TONNES

1.1
MILLION...

0.8
MILLION
TONNES




BITUMEN &
CEMENT




CONTAINERISE
D GOODS



> **30**
KEY COMMODITIES



FUEL, GAS &
CHEMICALS




CARS &
EQUIPMENT




METALS,
MINERALS &
MINING




CATTLE, MEAT,
RICE & SUGAR





LIQUIDS

BULK MINERALS

CONTAINERS

CEMENT

FERTILISER

MINERALS

CATTLE, MOTOR VEHICLES

SUGAR

CRUISE/DEFENCE

MINERALS

FUELS

CONTAINERS

SUGAR

SUGAR



TOWNSVILLE'S TRADE
IS FORECAST TO

TREBLE

OVER THE NEXT

30 YEARS

40 MILLION TONNES BY 2045



EVERY MONTH THE WORLD
POPULATION GROWS BY A CITY THE
SIZE OF HONG KONG

9 BILLION

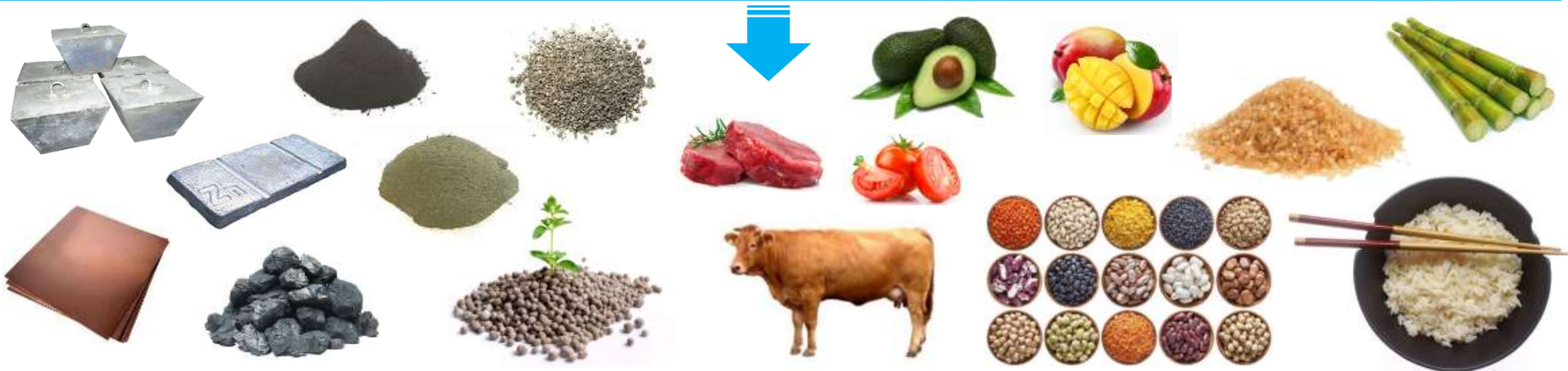
PEOPLE BY

2050



DRIVING IMPORTS FOR NORTHERN QUEENSLAND

DRIVING EXPORTS FROM NORTHERN QUEENSLAND





	TONNAGE 2015	TONNAGE 2045
ZINC	1,600,000	3,000,000+
COPPER	400,000	600,000+
LEAD	350,000	800,000+
MAGNETITE	-	4,000,000+
COAL	-	10,000,000+



BEEF	2015	2045
LIVE CATTLE (HEAD)	300,000	600,000+
BOXED BEEF (TONNES)	50,000	100,000+

AGRICULTURE	2015	2045
CROPPING AREA (HA)	175,000	380,000
EXPORTS (TONNES)	2,500,000	4,500,000+
Sugar, sorghum, fertiliser, phosphate, soybeans, cotton, wheat, mung beans, rice, horticulture		



AUSTRALIA'S CONTAINERISED
INTERNATIONAL
EXPORTS WILL ALMOST

DOUBLE BY
2030

DUE TO STRONG DEMAND FROM CHINA
AND SOUTH EAST ASIA

*Department of Infrastructure and Regional
Development, 2014*

TOWNSVILLE IS THE HUB TO SERVICE

700,000

PEOPLE

70%

OF NORTHERN AUSTRALIA'S POPULATION



MEMORANDUM OF UNDERSTANDING
ON SISTER PORT COOPERATION



3

SISTER PORTS:

IPC (INDONESIA)
HUIZHOU (CHINA)
QINZHOU (CHINA)



An aerial photograph of a large container ship sailing on the ocean. The ship is viewed from an elevated angle, showing its deck and the stacks of colorful containers (green, red, and white) on top. The ship is moving towards the right, leaving a white wake behind it. The background is a vast expanse of blue water.

10 DAYS

AUSTRALIA'S FASTEST CONTAINER
SERVICE TO MAINLAND CHINA:

TOWNSVILLE – SHANGHAI DIRECT

An aerial photograph of a coastal city and harbor, overlaid with a semi-transparent blue filter. The image shows a large body of water in the foreground, a city with various buildings and infrastructure in the middle ground, and mountains in the background. The text is centered over the image.

> \$500M

RECENT INFRASTRUCTURE PROJECTS

\$85M

BERTH 10 & CRUISE TERMINAL



\$217M

PORT ACCESS ROAD



\$85M

BERTH 8 EXPORT FACILITY



\$130M

MARINE PRECINCT



\$2M

CARGO STORAGE AREAS



\$14M

BERTH 6/7 DEMOLITION





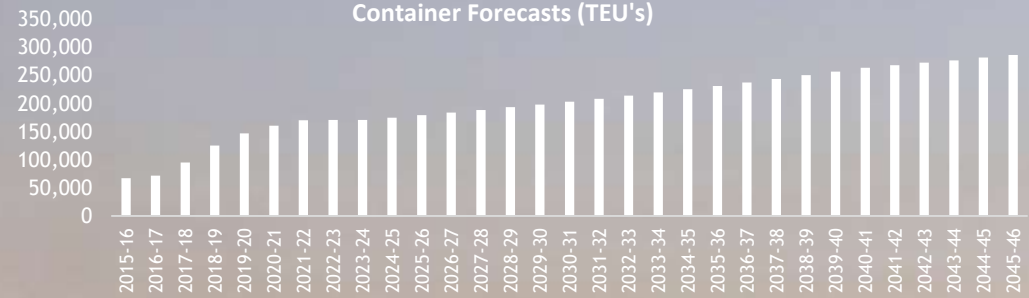
> \$2 BN

FUTURE INFRASTRUCTURE PROJECTS

\$40.7 MILLION

>100,000
TEU THROUGHPUT

DEC 2017
COMPLETION DATE



\$1.6 BN PORT CAPACITY EXPANSION



40 MTPA BY 2045
UNDER HIGH GROWTH

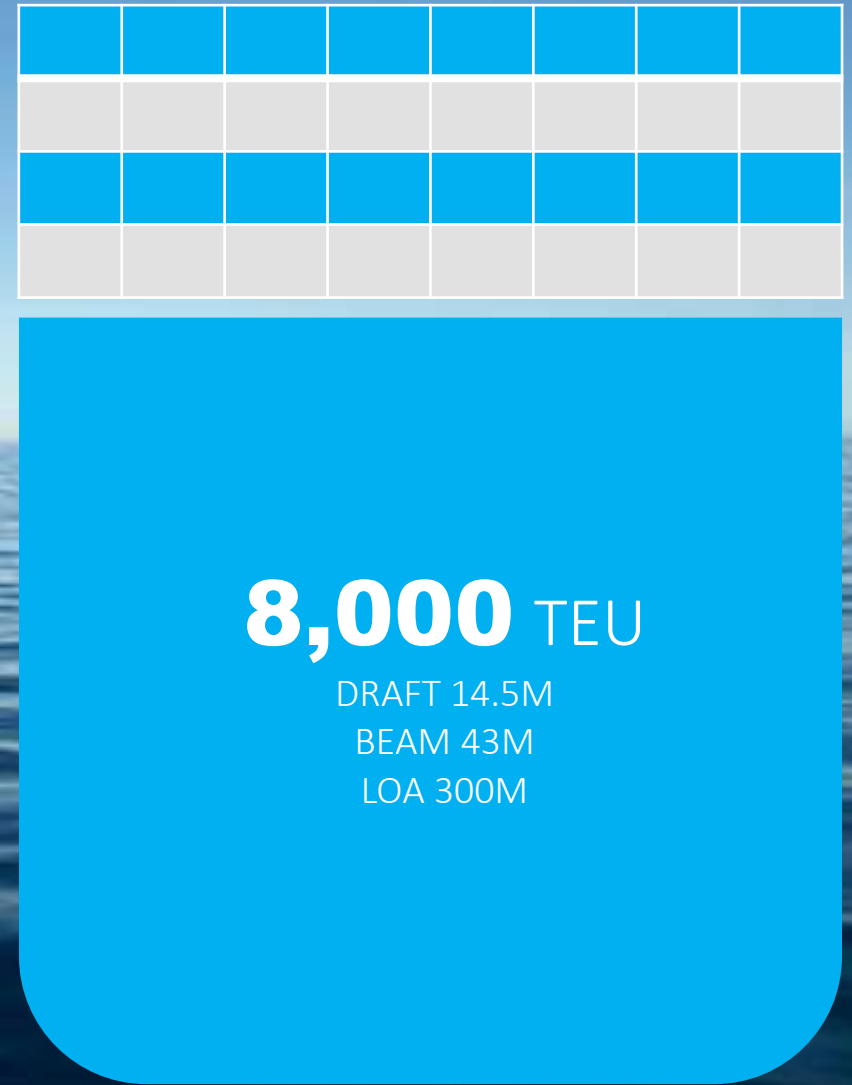
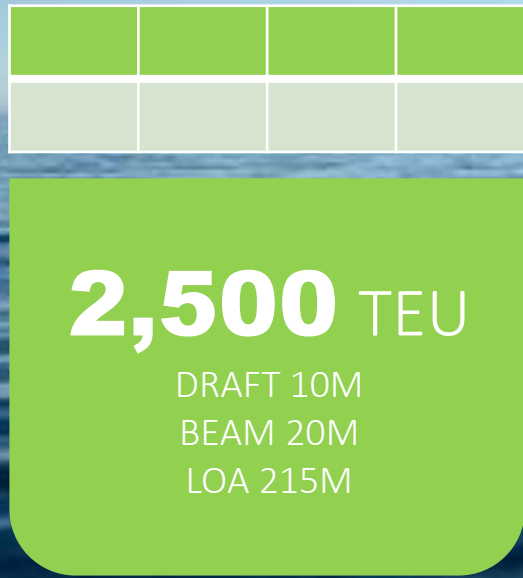
30 YR
STAGED DEVELOPMENT

6
NEW BERTHS

150 HA
RECLAMATION AREA

4.0/5.0

VESSEL SIZE INCREASES



92M CHANNEL WIDTH

100-130M CHANNEL WIDTH

135-180M CHANNEL WIDTH





Platypus & Sea Channel Connection
Widening from 92m—135m

Sea Channel
Widening from 92m—120m

Platypus Channel
Widening from 92m—180m

SEA CHANNEL

PLATYPUS CHANNEL



CHANNEL WORKS

PORT EXPANSION AREA

FUTURE RAIL
CORRIDOR

4,900 HA

STATE INDUSTRIAL AREA

8 KM

NEW RAIL LINK

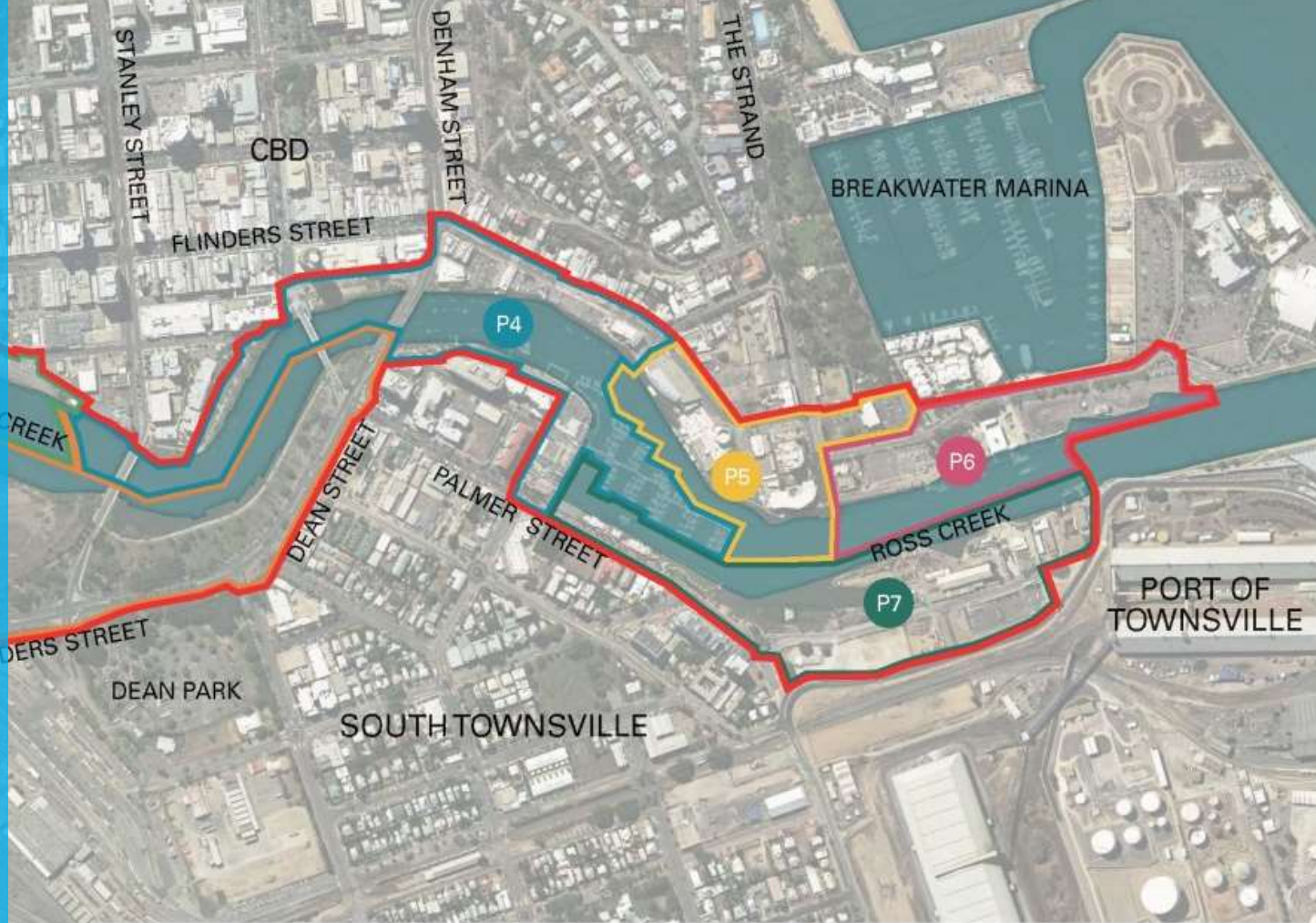
NORTH, SOUTH & WEST
MAJOR ROAD & RAIL
CONNECTIONS



97

HECTARE

TOWNSVILLE WATERFRONT REDEVELOPMENT



-  PDA Boundary
-  P1 Precinct 1 - City Waterfront Gateway
-  P2 Precinct 2 - Waterside Living
-  P3 Precinct 3 - Culture and Entertainment
-  P4 Precinct 4 - City Reach
-  P5 Precinct 5 - Tourism and Research
-  P6 Precinct 6 - Ocean Gateway
-  P7 Precinct 7 - Maritime Mixed Use

1

CRUISE TERMINAL

4

PALMER ST DINING PRECINCT

2

CASINO

5

FLINDERS ST TOURISM & ENTERTAINMENT PRECINCT

3

THE STRAND

6

REEF HQ AQUARIUM

**EAST
BANK**

**WEST
BANK**



Commercial Offices, Hotels & Dining



Reef Terminal & Tour Operators





Hotels, Accommodation & Marine Science Precincts



PORT OF TOWNSVILLE

NORTHERN AUSTRALIA'S TRANSPORT LINK TO THE WORLD



TOWNSVILLE



PORT of
TOWNSVILLE